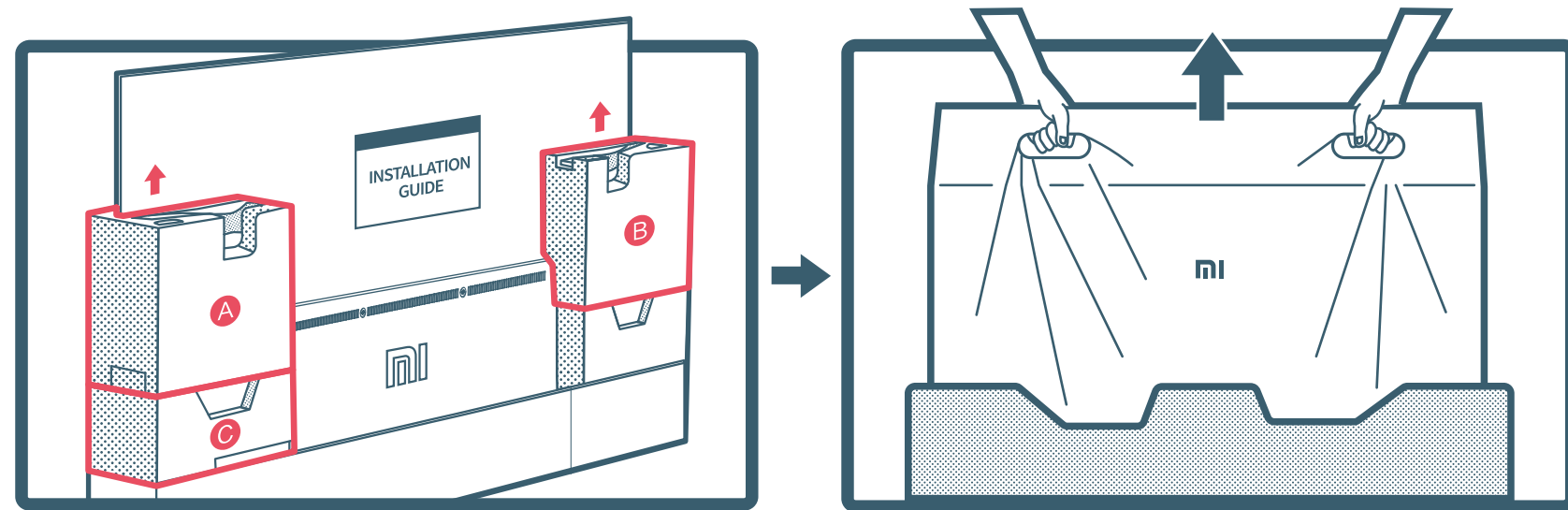


LED TV Safety Notice and Installation Guide



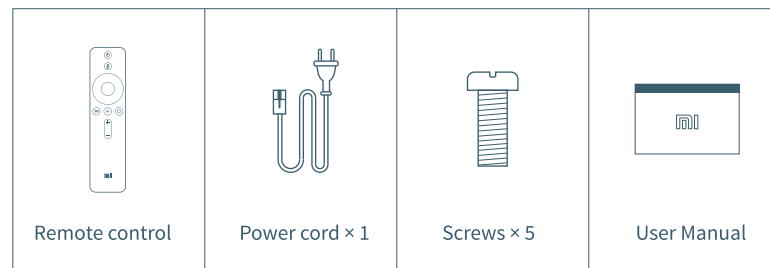
Remove the accessories

Remove the A and B styrofoam protectors. Take out the power cord, remote control, and screws from the protector C.

Take out the TV set

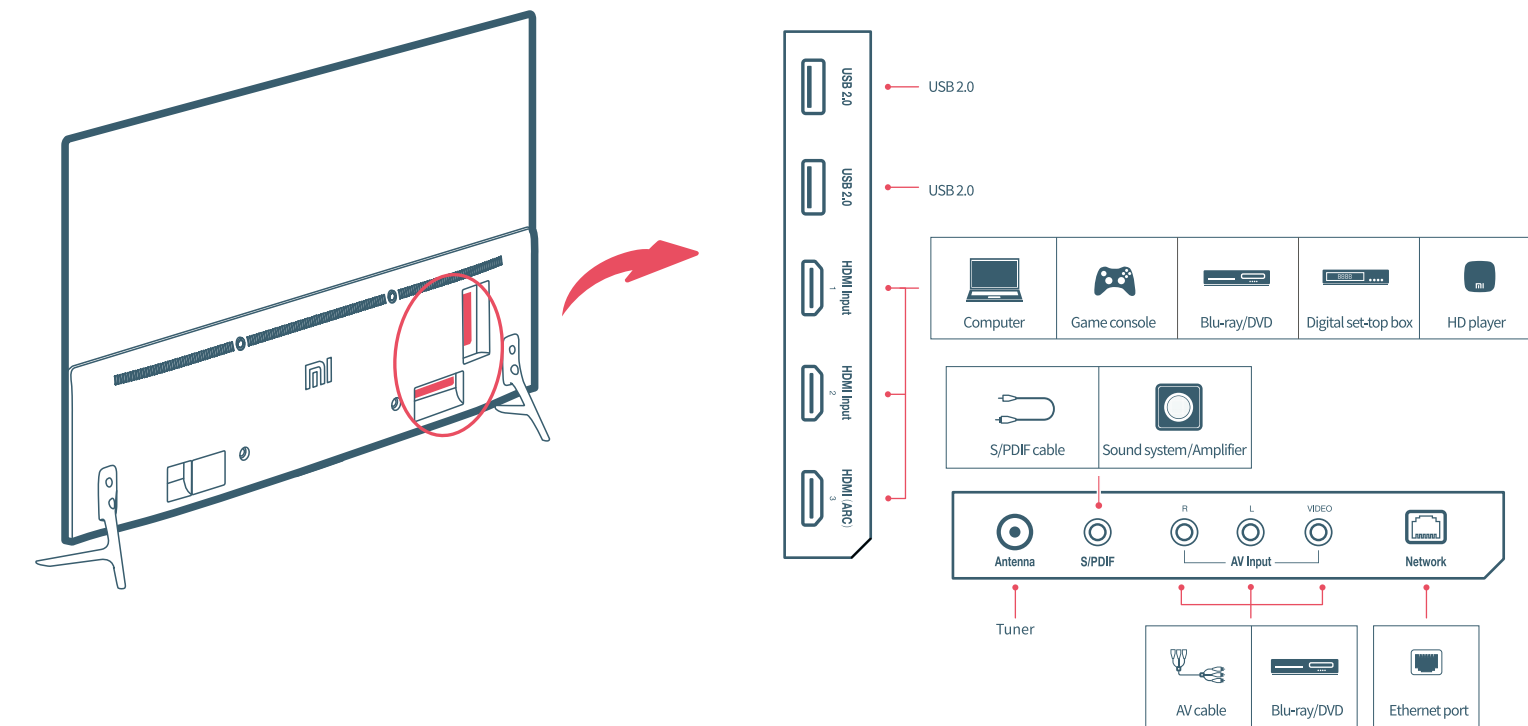
Remove the TV set from the protector and place it on a level surface with screen facing down.
*This should be performed by 2 people. Be careful not to damage the screen.

Accessories



Note:
1) Accessory Items may vary depending upon model.
2) Specifications may change without prior notice. Recommended visiting website (www.mi.com) for latest updates.

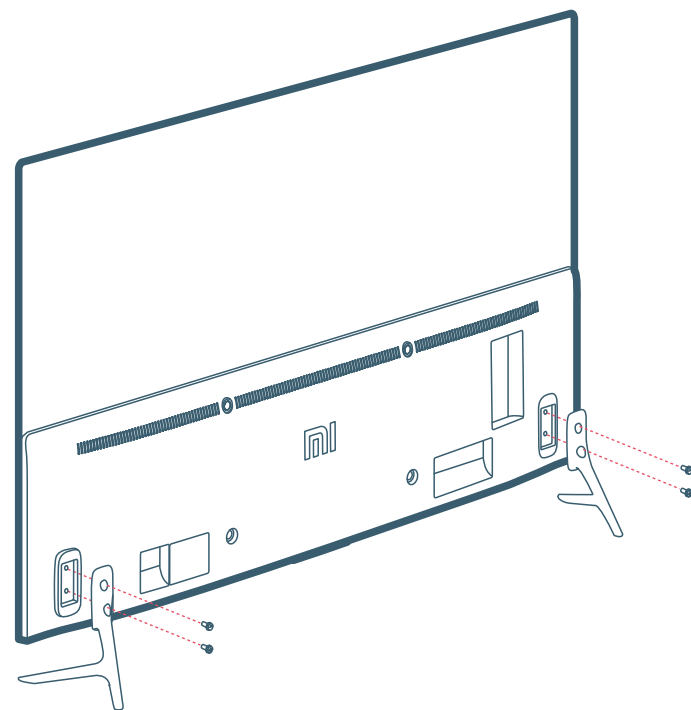
TV interface



Specs

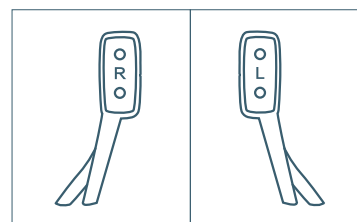
Basic Specs	Screen size: 138.8 cm Screen resolution: 3840x2160 (4K)	Wireless Connectivity	Wi-Fi: 2.4/5GHz, 802.11a/b/g/n/ac Bluetooth: BT4.2
Hardware Specs	CPU: Quad-core CA53 Internal memory: 2GB DDR Flash memory: 8GB eMMC Graphics processor: Mali-450MP	Audio and Video Decoding	Audio formats: FLAC / AMR / DTS-HD / AAC / OGG / DOLBY DIGITAL PLUS Video formats: MPEG 2/4 / H.263 / H.264 / H.265 / VP8 / VP9 / VC1
Ports	Input interface: HDMI x 3; AV x 1; Antenna x 1 Output interface: Digital audio output (S/PDIF) x 1 Audio output HDMI (ARC) x 1 Data interface: USB2.0 x 2; Ethernet port x 1	Audio Effects	Dolby Audio
		Other Specs	Android TV Model: L55MS-AN Voltage: 100-240V~ 50/60Hz Rating power: 155W

Installing legs



01 Install legs

Both left and right legs are clearly marked. Install them as shown in the picture.



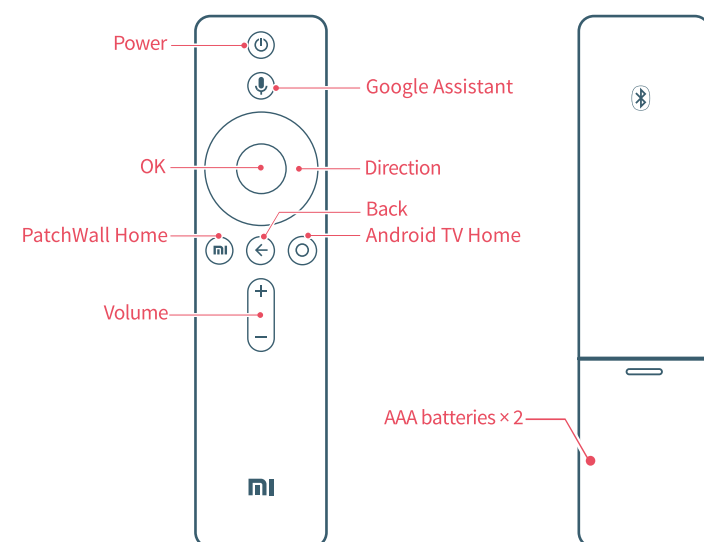
02 Turning on your TV

Connect one end of provided power cord to TV and another to ac power outlet carefully.

Push the power button located at bottom of TV (or press power button on remote.) to turn it on.
Follow screen instructions of quick start guide to setup TV.

*Remove the protective film from the TV frame and the back side of the TV set before turning on.

Using the remote control



Power: Short press to power off TV; Long press to select Power off or Restart TV.

Google Assistant: Short press and release to talk to Google Assistant.

OK: Press to confirm current selection during navigation. You can pause/play the current video during playback, except Live Channels(Set-Top Box or RF).

Android TV Home: Short press to quickly return to the Android TV Home screen.

PatchWall Home: Short press to quickly return to the PatchWall Home screen.

Direction: Navigate up/down or left/right through content. During playback use left/right buttons to rewind/fast-forward.

Back: Go back to the previous level.

Important precautions

Installation

- The TV should be installed near an AC power outlet that can be easily plugged and unplugged.
- Place the TV on a smooth, flat surface to avoid the TV falling and causing injury, or damaging the TV.
- If you intend to install a TV wall mount, we recommend that you use an authorized TV wall mount. For details, please contact the Xiaomi service hotline.
- The diameter and length of the screws will vary depending on the wall mount model. Failure to use the correct screws may cause the TV to fall or lead to internal damage.

Moving

- Disconnect all cables before moving the TV.
- Large TVs need 2 or more people to move safely. Avoid applying pressure to the LED panel when moving the TV. Avoid shaking the TV or exposing it to excessive vibrations.
- When moving the TV to a new location or to carry out repairs, package the TV using the original box and packaging materials.

Ventilation

- Do not cover the ventilation holes or insert any objects into the case.
- Keep a space for ventilation around the TV.

Wall mounting

- In order to ensure proper ventilation and prevent the buildup of dust or dirt:
- Do not mount the TV flat, upside-down, or backwards, or side-mount the TV.
- Do not place the TV on a shelf, carpet, bed, or closet.
- Do not place any heavy objects on the TV, or other materials (such as newspapers).

AC power cord

- Use the AC power cord and socket according to the instructions below to avoid fire, electric shock, damage, or personal injury.
- Insert the plug completely into the AC outlet.
- Use the TV with a 90-300V AC power source.
- When connecting cables, the AC power cord should be unplugged for safety reasons. Be careful not to trip over cables.
- Before carrying out work or moving the TV, disconnect the AC power cord from the AC power outlet.
- Keep the AC power cord away from heat.
- Unplug the AC power plug and clean it regularly. If the plug is covered with dust and has water spots, its insulation quality may deteriorate, producing a fire risk.
- Avoid excessive pinching, bending, modifying, or twisting of the AC power cord, otherwise the wires may become exposed or broken.
- Do not place any heavy objects on the AC power cord.
- Do not pull the AC power cord when disconnecting the power.
- Do not connect too many devices on the same AC power outlet.
- Do not use unsuitable AC power outlets.
- Power supply disconnection devices (such as switches, power plugs, sockets, appliance couplers, etc.) must not be surrounded by clutter to facilitate access.

Conditions

- Do not use the TV when your hands are wet, when the case is open, or with accessories that are not authorized by the manufacturer. In the case of a lightning storm, disconnect the TV from the AC power cord and AC outlet. Do not install the TV in an open-air location. Failure to follow these conditions may result in personal injury or damage, or cause objects to strike the TV.

Operating conditions

- Operating temperature: 0°C-45°C Humidity: 20%-80% Storage temperature: -15°C-40°C Relative humidity: <80%

Precautions

- Watch TV in appropriate lighting conditions. Watching TV in insufficient light or for long periods can damage your eyesight.
- The screen and case will get hot when the TV is working. This is normal.
- Do not support the decoding of DTS-CD bitstream coming in from HDMI IN.

Using and cleaning the screen/case of the TV

- Before cleaning the LED TV, ensure that the AC power cord is disconnected from the AC power outlet. In order to avoid deterioration of the casing materials or corroding the screen coating, please observe the following precautions:
- Wipe with a soft cloth to remove any dust on the surface of the screen/case. If there is still dust, wipe with a soft cloth that has been moistened with a mild detergent.
- Do not spray water or detergent directly onto the TV; it may drip to the base of the screen or external parts, causing malfunction.
- Do not use scrub pads, alkaline/acid cleaners, scouring powder, or volatile liquids, such as alcohol, volatile oils, thinners, or insecticides. The use of the above materials or prolonged contact with rubber or vinyl products may cause damage to the screen surface and casing materials. It is recommended that you regularly clean the vents to ensure proper ventilation.
- When adjusting the angle of the TV, slowly move the TV to prevent it moving or slipping from the base.

Important notice

There is no protective film on the screen. Do not try to remove anything from the screen.

E-Waste

- Xiaomi products are in conformity with the requirements of the reduction of hazardous substances of the E-waste Rule 2002. The content of hazardous substance with the exemption of the applications listed in SCHEDULE 8 of the E-waste Rules:
- Lead (Pb) - not over 0.1% by weight;
- Cadmium (Cd) - not over 0.01% by weight;
- Mercury (Hg) - not over 0.1% by weight;
- Hexavalent chromium (Cr6+) - not over 0.1% by weight;
- Polybrominated biphenyls (PBBs) - not over 0.1% by weight;
- Polybrominated diphenyl ethers (PBDEs) - not over 0.1% by weight.

Advertising

This TV displays advertising when it is switched on and off. The advertising that is displayed when the TV is switched on and off cannot be removed or absent, and we have no control over the content of third party advertising.

In case of the following problems ...

- The AC power cord is damaged.
- The AC power outlet is not suitable.
- The TV is damaged due to a drop or impact.
- Any liquid or solid object falls into the case through an outlet.
- Turn off the TV and immediately unplug the AC power cord. Ask the Xiaomi service center to dispatch qualified service personnel to investigate.

Usage restrictions

- Do not install the TV in the following places, environments, or conditions, otherwise the TV may malfunction and cause a fire, electric shock, damage, or personal injury.
- Places: Outdoors (in direct sunlight), by the sea, in a ship or other vessel, inside a car, in a medical institution, at an unstable location, next to water, or in a place exposed to rain, moisture, or mist. If the TV is placed in the dressing room of a public bath or spa, it may be damaged by the sulfide in the air.

Environment

- Hot, damp, or dusty places; places where insects may enter; places that may be exposed to mechanical shock; next to flammable objects (such as candles). The TV should not be exposed to dripping or splashing water, and do not place any items containing liquid such as flower vases on top of the TV. Do not place the TV in a damp or dusty place, or in a room with steam or fumes (near a stove or humidifier) to avoid fire, electric shock, or deformation. Do not boil water, heat, cook noodles, or use mosquito coils near the TV.

Conditions

- Do not use the TV when your hands are wet, when the case is open, or with accessories that are not authorized by the manufacturer. In the case of a lightning storm, disconnect the TV from the AC power cord and AC outlet. Do not install the TV in an open-air location. Failure to follow these conditions may result in personal injury or damage, or cause objects to strike the TV.

Damage to TV screen

- Do not throw any objects toward the TV, otherwise the screen may be broken due to the impact and cause serious injury. In case of damage to the surface of the TV, do not touch the TV before the AC power cord has been unplugged, otherwise electric shock may occur.

Operating conditions

- Operating temperature: 0°C-45°C Humidity: 20%-80% Storage temperature: -15°C-40°C Relative humidity: <80%

Precautions

- Watch TV in appropriate lighting conditions. Watching TV in insufficient light or for long periods can damage your eyesight.
- The screen and case will get hot when the TV is working. This is normal.
- Do not support the decoding of DTS-CD bitstream coming in from HDMI IN.

Using and cleaning the screen/case of the TV

- Before cleaning the LED TV, ensure that the AC power cord is disconnected from the AC power outlet. In order to avoid deterioration of the casing materials or corroding the screen coating, please observe the following precautions:
- Wipe with a soft cloth to remove any dust on the surface of the screen/case. If there is still dust, wipe with a soft cloth that has been moistened with a mild detergent.
- Do not spray water or detergent directly onto the TV; it may drip to the base of the screen or external parts, causing malfunction.
- Do not use scrub pads, alkaline/acid cleaners, scouring powder, or volatile liquids, such as alcohol, volatile oils, thinners, or insecticides. The use of the above materials or prolonged contact with rubber or vinyl products may cause damage to the screen surface and casing materials. It is recommended that you regularly clean the vents to ensure proper ventilation.
- When adjusting the angle of the TV, slowly move the TV to prevent it moving or slipping from the base.

Important notice

There is no protective film on the screen. Do not try to remove anything from the screen.

E-Waste

- Xiaomi products are in conformity with the requirements of the reduction of hazardous substances of the E-waste Rule 2002. The content of hazardous substance with the exemption of the applications listed in SCHEDULE 8 of the E-waste Rules:
- Lead (Pb) - not over 0.1% by weight;
- Cadmium (Cd) - not over 0.01% by weight;
- Mercury (Hg) - not over 0.1% by weight;
- Hexavalent chromium (Cr6+) - not over 0.1% by weight;
- Polybrominated biphenyls (PBBs) - not over 0.1% by weight;
- Polybrominated diphenyl ethers (PBDEs) - not over 0.1% by weight.

For the purpose of recycling to facilitate effective utilization of resources, please return this product to a nearby authorized collection center, registered dismantler or Recycler, or Xiaomi Service Centre when disposing of this product.

What the Wheelie Bin symbol means: The symbol says don't dispose your e-waste into the municipal waste collection bins. That's because these wastes are hazardous in nature and need to be recycled in a special way.

How to dispose this product
Carry it to nearest service center of Xiaomi OR Call the Toll Free Number: 1800 103 8288 OR Write to us on service.mij@xiaomi.com. Instructions of handling the product during and after its use and Do's and Don'ts with respect to handling the product:

Do's:
a. Always look for information on the catalogue with your product for end-of-life equipment handling.
b. Ensure that only Authorized Recyclers repair and handle your electronic products.
c. Always call Authorized E-waste Recyclers to Dispose products that have reached end-of-life.
d. Always drop your used electronic products, batteries or any accessories when they reach the end of their life at your nearest Authorized E-Waste Collection Center / Collection Point.
e. Wherever possible or as instructed, separate the packaging material according to responsible waste disposal options and sorting for recycling.

Don'ts:
a. Do not dismantle your electronic Products on your own.
b. Do not throw electronics in bins having "Do not Dispose" sign.
c. Do not give e-waste to informal and unorganized sectors like Local Scrap Dealer/ Rag Pickers.

Google Assistant: The MI LED TV has the Google Assistant built in. Ask it questions, and tell it to do things. The more you use it, the more useful it gets. It's your own personal Google. Always ready to help.

Chromecast built-in: Cast your favorite entertainment apps—movies & TV shows, music, games, sports and more—from your Android or iOS device, Mac or Windows computer, or Chromecast to the TV. First Chromecast-enabled apps at chromecast.com.

Manufactured under license from Dolby Laboratories. Dolby, Dolby Audio and the double D logo are trademarks of Dolby Laboratories.

DTS: For DTS patents, see <http://patents.dts.com>. Manufactured under license from DTS Licensing Limited, DTS, the Symbol & DTS and the Symbol under license are registered trademarks, and DTS-HD is a trademark of DTS, Inc. © DTS, Inc. All Rights Reserved.

HDMI: The terms HDMI and HDMI logo are registered trademarks, and the HDMI logo and other marks are trademarks of HDMI Licensing LLC.

For more accessories, please visit www.mi.com or MI Customer Service: www.mi.com/service